

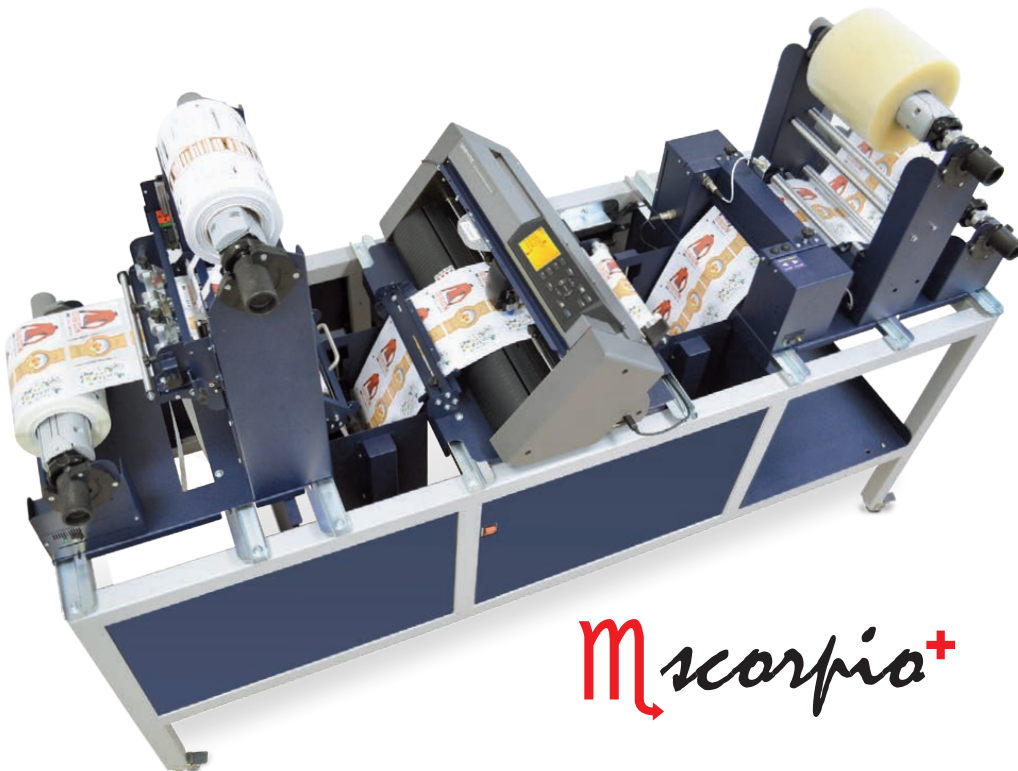
# A WORLD OF SOLUTIONS

THIS PRODUCT IS CERTIFIED:



SMART SOLUTIONS FOR THE LABELING INDUSTRY

## SCORPIO PLUS - DIGITAL LABEL FINISHING SYSTEM



**scorpio+**

Scorpio Plus has been developed for performance and value and it is the perfect finishing device to the digital color label printers powered by Memjet or dry toner.

The system is an affordable digital label finishing equipment that meets the needs of all converters and end-users who have short run label finishing demands.

Scorpio Plus is an "all-in-one" user-friendly solution that laminates, digitally contour cuts, removes waste, slits and rewinds your labels.

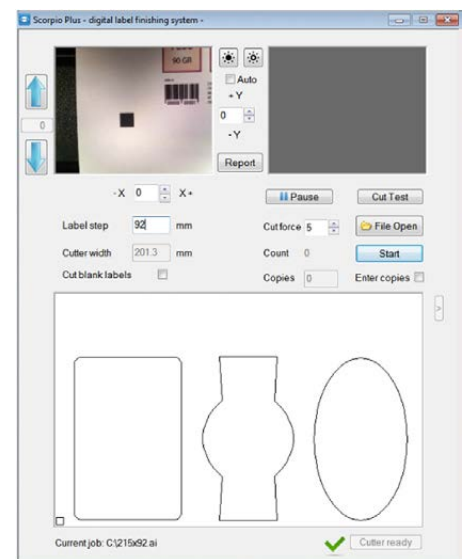
The finisher uses plotting technology that can cut any dye shape on the fly. This offers users full flexibility in label design, and it avoids the purchasing of expensive dye tools.

I-Mark software, through the use of a camera, offers an optical black mark registration system. Impressive speed and precision registration offered by this digital label finishing solution allow users to produce short run labels "in house", thus reducing their inventory requirements and costs.

Producing full bleed labels will no longer be a nightmare. Print over-bleed artworks and enjoy the quality provided by our Digital Label Finishing System!

Further benefits of print on continuous material first and cut labels later:

- » You can add transparent laminate on top for weather resistance enabling to make labels for outside use (using low price, common media for printing).
- » No need to order pre die-cut label rolls (cheaper sourcing).
- » No need to adjust labels very precisely when doing full bleed labels.
- » No need for 5 mm (0.20") gap between labels when printing in full bleed (saving material).
- » Can print multiple rolls next to each other, then cut to smaller ones later (higher output on printer).



i-Mark: cutter management tool.



We also offer a gloss lamination film roll for the protection of your printed labels. With a strong resistance to ultra-violet rays, water, and to high temperatures, the gloss lamination is a linerless 28 µm polypropylene film, equipped with a 20 µm acrylic water based adhesive. Two widths are available to better fit your needs.

- 7.48" x 2500' (190mm x 762m)

- 6.30" x 2500' (160mm x 762m)

# A WORLD OF SOLUTIONS

THIS PRODUCT IS CERTIFIED:



## SMART SOLUTIONS FOR THE LABELING INDUSTRY

### TECHNICAL SPECIFICATIONS

Input / Output roll max. diameter	250 mm (9.84")
Minimum / Maximum web width	110 mm (4.33") / 225 mm (8.86")
Maximum cutting width	200 mm (7.87")
Minimum slitting width	19 mm (0.75")
Minimum / Maximum label length	10 mm (0.39") / 300 mm (11.81")
Maximum media thickness	0.25 mm (10 mil)
Maximum cut speed	600 mm/s (24 in/s) in all directions
Roll core size	76 mm (3")
Cut Type	1 Drag knife and tangential emulation
Number of slitting blades	up to 8
Data interface	USB 2.0
Linear cut speed	Dependent on graphic 2 squares across 80 x 80 mm (3.15"x3.15") = 34 labels per min.
Programmable Cutting Force	20 gf - 300 gf in 31 steps (Max 300 gf)
Test cut function	Yes
Cut to registration	Single point registration black mark (4 mm square)
Cut ability	Both printed and unprinted media
Interface & Software:	I-Mark (Windows OS) cutter management tool. Plug-ins for CorelDraw and Adobe Illustrator
Power requirements	100-240 VAC, 240 watts
Agency Certifications	CE, FCC, RoHS
Warranty	One year parts and labor. Usage limitation may apply.

### MECHANICAL SPECIFICATIONS

Part number	SCR22PL
Dimensions	W= 200 cm (78.74") D = 70 cm (27.56") H = 145 cm (57.06")
Weight (estimated)	235 kg (518 lb)



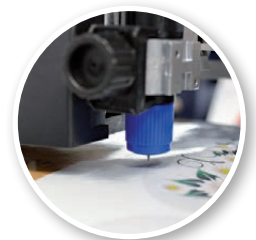
Laminating



Core holder's clutch



Camera



Knife cutting



Tension arm



Adjustable clutch



Waste matrix removal



Slitting



Rewinding to finished rolls



Shelf